



Below are the words to the song “2442” written by Joe Finamore in 1995. Joe sang the song at the 2442 Rededication on September 14th, 1996 and again at her 101st birthday party, June 24th, 2012.

### “2442”

*Born in a foundry in a blazing shower of steel  
They christened her in fire at the boilermakers’ hands  
The engineers they said she had a sturdy look and feel  
The gandy dancers laid her rails down through the promised lands*

*2442’s been losing track but it’s coming back  
2442’s been losing track but it’s coming back  
Her boiler’s long been rusting but pride keeps her intact  
2442’s been losing track but it’s coming back*

*She hauled her loads for many years on the railroad they call Soo  
She pulled her cars of timber form the vast Wisconsin woods  
She left them at the sawmills that built the towns en route  
Then loaded up again with crates of proud Wisconsin goods*

*2442’s been losing track but it’s coming back  
2442’s been losing track but it’s coming back  
Her boiler’s long been rusting but pride keeps her intact  
2442’s been losing track but it’s coming back*

*The end of the line came in the ‘fifties days  
They parked her on a single piece of track near the zoo  
They emptied out her coal car and put her on display  
So all could see the spirit that was 2442*

*2442’s been losing track but it’s coming back  
2442’s been losing track but it’s coming back  
Her boiler’s long been rusting but pride keeps her intact  
2442’s been losing track but it’s coming back*

©1995—Joseph Finamore  
All rights reserved

*In his November 4, 1956 acceptance address, Mayor Madison called attention to the important part railroads had in the founding and development of Marshfield, and read the following proclamation:*

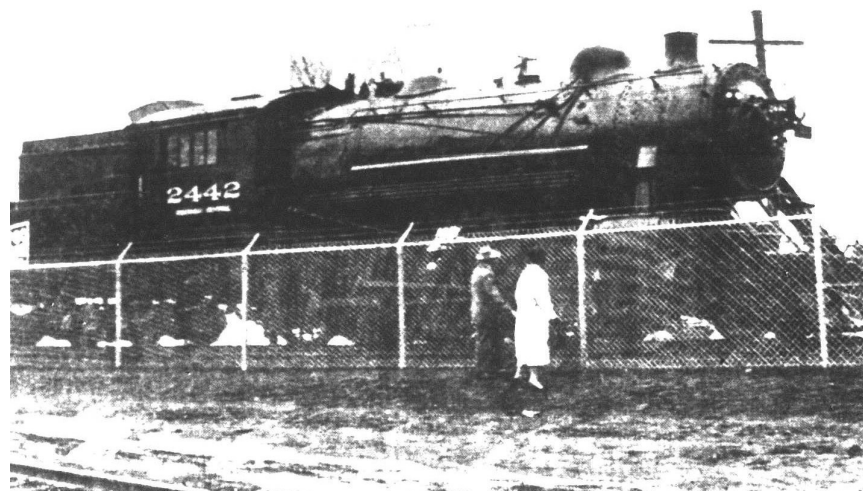
*“Whereas, This Iron Horse given to the City of Marshfield by the Soo Line, and*

*“Whereas, This Horse has worked long and faithfully for the Soo Line and for the Public and is therefore entitled to retirement, and*

*“Whereas, The life of this 170 tons of steel and iron is in determinate,*

*“I, therefore dedicate this locomotive 2442 to posterity and on this 4th day of November, 1956, hereunto set my hand and seal, Glen Madison, Mayor.”*

*For more information contact:  
Historic Preservation Committee*



*OLD 2442—This is the old and toll-worn Soo Line steam engine that was presented to the city of Marshfield at dedication ceremonies Sunday afternoon [November 4, 1956] at Wildwood Park. “Old 2442” was built at Schenectady, N. Y., in 1911, and as indicated by its present appearance—even though repainted and glistening—the old “putter” really led a hard life. (Caption and photo from Marshfield News-Herald Photo, November 5, 1956)*

207 W 6<sup>th</sup> Street  
Marshfield, WI 54449  
[http://ci.marshfield.wi.us/businesses/historic\\_preservation/index.php](http://ci.marshfield.wi.us/businesses/historic_preservation/index.php)

Development Services Department  
(715) 486-2074

Funded by: City of Marshfield Common Council  
Developed by: V. Schnitzler for the Marshfield Historic Preservation Committee, 2016



SOOLINE/WISCONSIN CENTRAL 2442

## Marshfield Historic Brochure



## Historical Facts of “2442”

- In 1911, under Soo Line auspices, a builder’s contract was let for several new, heavier freight and passenger locomotives to ensure timelier movement of freight and passengers on the Wisconsin Central Railway.
- Locomotive 2442 was one of 15 Class F-22 “heavy” freight Consolidation-type engines built by the American Locomotive Company at the Schenectady Works in Schenectady, New York in May of 1911 to fill that order.
- 2442 generated 43,000 pounds of tractive power.
- Fully loaded with coal and water, locomotive and tender weighed 351, 263 pounds.
- While attached to the tender, the locomotive measures approximately 67 feet over the pulling faces of the couplers.
- Engine 2442 and 2713 located in Stevens Point, Wis., are “sister” locomotives in that they were built across the erecting floor from each other at American’s plant in Schenectady.
- Builder’s assigned their own number to each locomotive, unique to that engine. 2442 is American Locomotive builder’s number 49785.
- In its early years, 2442 was used almost exclusively on the First Subdivision of the railroad, from North Fond du Lac, Wis., to Forest Park, Ill.
- As larger steam locomotive examples began to be purchased by Soo Line/W.C., 2442 eventually migrated to other parts of the Soo/W.C. system, including working on local “peddler” freights out of Park Falls, Wis., south to Medford., and from Marshfield to Nekoosa. There is unsubstantiated rumor that 2442 even took a work train out to Greenwood, Wis., at least once, from Marshfield.
- 2442’s first year miles run, up to June 30, 1912, were 35,324.
- A statement dated January 1, 1928, stated that 2442 had Fire-box Side Sheet miles of 567,369 miles and still had its original sheets.
- At an average of 35,000 miles per year, with a working life of



Soo 2442 at Nekoosa, 2-8-0, July 8, 1953

43 years, 2442 ran up a cumulative mileage of 1,518,932 in her 43-year career on the Soo Line.

- During its 43-year career, 2442 was wrecked at least twice: approximately 1918 at Oshkosh, Wis., and at another, undocumented point years later that resulted in 2442 being fitted with a new smoke-box front, smoke-box door, non-standard Pyle National “Flat Side” Headlight (Soo Line preferred the Pyle National “Wing Board” headlight where the side num-

berboards stuck out at a thirty-degree angle) and a non-standard headlight pedestal.

- Following World War I, 2442 and her sisters were given heavy overhauls at Manitowoc Shipbuilding Co., in Manitowoc, Wis., in the 1922-1926 time period.

- 2442’s final operation was in 1954, when it was retired and set aside by the Soo/W.C. for “possible” donation to an on-line community.
- It was placed in storage at North Fond du Lac, Wis., and stored until 1956, when it was selected by officials from the City of Marshfield and relocated to its present site at the Entrance to Wildwood Park here in the City of Marshfield.

- Cosmetic Restoration on the locomotive occurred in 1996 by the Marshfield Historic Preservation Association that included asbestos removal, sand blasting, repainting and buffing.
- Between the years of 1996 and 2014 very few repairs or renovations were completed on 2442.
- During the winter of 1999-2001, renovations on the seat deck on the engineer’s side were started.
- During 2014-2015, additional extensive renovations were completed:
  - The cab roof was replaced.
  - The firing floor in front of the fire box was replaced.
  - The seat deck was replaced.
  - All original hardware was put back into the cab walls by Keith Meacham.
- Early in 2016, the City of Marshfield, reinstated the train shelter lights.

(from Keith Meacham collection)

- Additional plans for 2016 and 2017, are to possibly redo the chain link fence surrounding 2442, to lay a brick walkway from the new pedestrian walking path to 2442 and install new permanent historical signage.

- Soo Line/W.C. Steam Locomotive 2442 is the only remaining example of the Soo Line/Wisconsin Central heavy class of Consolidation-type steam locomotives saved by the Soo/W.C., an example of the four classes of heavy 2-8-0 types operated by the Soo/W.C. which included Old Soo Classes F-11 and F-12, and Wisconsin Central Classes F-22 and F-23.