

Kith and Kin

Official Newsletter of the Marshfield Area Genealogy Group

Inside this issue:

President's Message	2
MAGG Officers	2
Index to Data Pages of Past Newsletters	3
Genealogical Writing: Indexing	3
Nelis R. Kampenga University Archives & Area Research Center, U.W. Stevens Point, Wisconsin	4-5
Miscellaneous Websites	6-7
Marshfield Draft Board Records 1917-1918	8-9
Family Searches For More of Architect's Structures	10-11
Upcoming Meetings	12

Volume 28 Issue 5

January—February 2012

The Polish Heritage Trail

We welcome you to tour through the central Wisconsin countryside to view the area, which is the first Polish rural settlement in the state and the second in the U.S.

Located on quiet, rural roads winding through the glacial terrain with its wooded countryside, lakes, and farm land are reminders of the Polish heritage of this area. The small communities, imposing churches, and several quaint roadside shrines and crucifixes create a pastoral and spiritual landscape not unlike the Kaszuby area in northern Poland from which the earliest Polish settlers came beginning in 1857.

Rock-lined fence rows show evidence of the challenge they faced to farm this land. The gracious red brick farm houses seen throughout the area show proof of their success.

Several parks provide an opportunity to picnic and to enjoy the atmosphere of America's heartland. A road map of



Portage County is recommended for those unfamiliar with the area.

Enjoy your tour!

Polish Heritage Awareness Society
Adeline M. Sopa, Chairperson

Editor's Note: For more information check out their website,

<http://www.pchswi.org/archives/townships/heritagetrail.html>.

Wisconsin Historical Society Names Matt Blessing Director of the Society's Library-Archives Division

The Wisconsin Historical Society has announced the appointment of Matt Blessing, head of special collections and archives at Marquette University in Milwaukee, as the director of the Society's Library-Archives Division. Blessing, who formerly worked as an archivist at the Society from 1991 to 1999, will begin his new duties on January 17. Blessing has worked as an archivist for Marquette since 1999, overseeing some of the university's most widely used collections, including the original manuscripts of J.R.R. Tolkien's *The Hobbit* and *The Lord of the Rings* as well as manuscript collections documenting Catholic social justice movements such as Dorothy Day's Catholic

(continued on page 7, column 2, *Wisconsin Historical Society*.)

President's Message

I hope everyone had a good holiday season! As winter approaches and our mild weather turns cold and snowy, many of us are slowly putting away the decorations, finishing the leftover cookies and candy and making those all important New Year's resolutions. In addition to the regular ones of loosing weight, quitting that bad habit or being better organized or whatever yours may be, I'd like to strongly suggest including the attending of any of the upcoming genealogical conferences.

At the local level, there will be genealogy workshops at the Marshfield Public Library, one sometime in February and another in May. There will also be many activities happening in Marshfield this summer pertaining to the 125th Anniversary of the Marshfield Fire. Stay tuned as we will let you know as dates become available.

Don't forget about the possibility of the Area Genealogical get-together with 5 or 6 of the Central Wisconsin genealogy societies probably this coming fall. We'll let you know when we hear details.

Then there are always the state conferences sponsored by the Wisconsin State Genealogical Society (WSGS), particularly Gene-A-Rama on April 27-28 in Green Bay this year (featuring Thomas MacEntee) and then the Fall Seminar, in October. Follow their website for registration info at <http://wsgs.wetpaint.com/>.

Have you ever attended a National Conference? Well if you are interested, the National Genealogical Society (NGS) will be having one fairly close this spring. On May 9-12, NGS will be hosting their 2012 Family History Conference in Cincinnati, Ohio. Additional information can be found on their website at <http://www.ngsgenealogy.org/cs/home>.

Good luck with all of your resolutions!

Vickie

MAGG Officers and Committees

President: [Vickie Schnitzler](#) (2013)

Vice President: Lorraine Markee (2012)

Secretary: [Pat Breden](#) (2012)

Treasurer: [Lorraine Rogers](#) (2013)

Members at Large: [Lori Belongia](#) (2013)

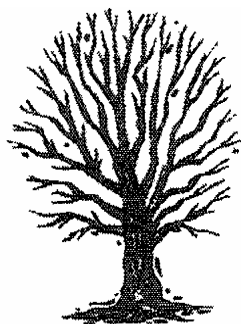
[Elaine Hansen](#) (2012)

Newsletter Editor: [Vickie Schnitzler](#)

Program: [Don Schnitzler](#)

Membership: Lorraine Markee

(Year office expires is in parentheses.)



The Marshfield Area Genealogy Group is an affiliate of the Wisconsin State Genealogical Society.

Our purpose is to provide meetings and programs of genealogical interest and to provide instruction in genealogical procedures. Also to collect, preserve, and disseminate genealogical data found in the Marshfield area and/or relative to the people of the Marshfield Area.

Meetings are held the fourth Thursday of the month except November and December.

Membership Information

Our membership year is from May 1 to April 30. Individual membership per year is \$12.00 and a Family membership is \$15.00 per year. For hardcopy newsletter add \$6.

Membership Forms can be downloaded from our website http://www.marshfieldgenealogy.com/Membership_form_2011_-_2012.pdf

and returned with payment to us at: MAGG, P.O. Box 337, Marshfield, WI 54449.

Index to Data Pages of Past Newsletters

To find any of the following data pages, go to our website at <http://www.marshfieldgenealogy.com/Past-Newsletters.html> and scroll down to the desired newsletter(s).

1878 Atlas of Wisconsin—Patron's Directory for Clark, Wood & Marathon Counties, Nov./Dec. 1985, Vol. 2, Is. 4—July/Aug. 1986, Vol. 3, Is. 2.

1883 Plat Book Listing of Individuals Living in McMillan & Unity Townships, Marathon County, WI, May/June 1984, Vol. 1, Is. 2—July/Aug. 1984, Vol. 1, Is. 3.

1890 Assessment Rolls, Marshfield, Wood County, WI, March/April 1987, Vol. 3, Is. 6 - Nov./Dec. 1987, Vol. 4, Is. 4.

1890 Assessment Roll, Village of Auburndale, Wood County, WI, Jan./Feb. 1988, Vol. 4, Is. 5 - March/April 1988, Vol. 4, Is. 6.

1892 Registration List of Voters, Marshfield, WI, May/June 1996, Vol. 13, Is. 1—July/Aug. 1996, Vol. 13, Is. 2.

1895 Assessment Rolls, Marshfield, WI, September/October 1995, Vol. 12, Is. 3— July/Aug., 1997, Vol. 14, Is. 2.

1904 Registration List of Voters, Marshfield, WI, July/Aug. 2002, Vol. 19, Is. 2—Sept./Oct. 2002, Vol. 19, Is. 3.

1908 Registration List of Voters, Marshfield, WI, Coming Soon

1917-1918 Marshfield, WI Draft Board Records, Nov./Dec. 2011, Vol. 28, Is. 4—current issue.

1918 German Aliens Who Registered at Post Office, Marshfield, WI, Nov./Dec. 1984, Vol. 1, Is. 4.

1940 (October), Pre-WWII Peacetime Draft—First 200 Draftees from Clark County, WI, July/Aug. 1994, Vol. 11, Is. 2—Sept./Oct. 1994, Vol. 11, Is. 3.

1953-1954 Index to Marshfield News Herald's "Down Memory Lane" Column, Mar./Apr. 1999, Vol. 15, Is. 6.

(Additional Data Page indexes from past newsletters will be listed in upcoming newsletters..)

Genealogical Writing: Indexing

One of the best resources for indexing your genealogy is *Indexing Family Histories: Simple Steps for a Quality Product* by Patricia Law Hatcher and John V. Wylie. Published by the National Genealogical Society in 1994, it is currently out of print but available at many libraries and genealogical societies. The following guidelines are just some of the many valuable pieces of information in the book.

Many factors go into producing a good index, not the least of which is the formatting. When publishing 6" x 9" pages, it is best to have a two column index. Three columns work well for an 8.5" x 11" book.

The type style should match the text and be one to two points smaller than the main part of the book.

A long list of subentries and page numbers separated by semi-colons written in paragraph style after the main entry is difficult to read and should be avoided. Each subentry should be indented about .25" under the main entry. Page numbers should appear immediately after the subentry, preceded by a comma. Do not right-align page numbers as this is also very difficult to read.

(from *Eastman's Online Genealogy Newsletter* (posted on March 16, 2011) and is copyrighted by Richard W. Eastman. It is reprinted here with permission of the author. Information about the newsletter is available at <http://www.eogn.com>.)

NELIS R. KAMPENGA UNIVERSITY ARCHIVES & AREA RESEARCH CENTER, U.W. Stevens Point, Wisconsin

Editor's Note:

The construction which began this summer has been completed!

“The UWSP Archives serves a nine county area that includes Adams, Juneau, Langlade, Lincoln, Marathon, Portage, Waupaca, Waushara, and Wood.”



Looking down between new Archives



Staff work area in newly remodeled U.W. Archives.

Phone: 715-346-2586

5th floor, Room 506, University Library
900 Reserve St.
Stevens Point, WI 54481

E-mail: archives@uwsp.edu

Archives Hours:

Monday - Friday, 7:45 - 12:00 (noon) &
1:00 - 4:30 p.m.

CLOSED:

Monday, December 26
Monday, January 2
Monday, January 16

The [Nelis R. Kampenga](#) University Archives houses three separate but complementary collections: [University records](#), [Portage County Historical Society](#) collections, and [Area Research Center](#) collections.

The one of primary interest to genealogists is:

[The Area Research Center Collection](#)

The Area Research Center Network (ARC) is composed of 14 sites located throughout the State of Wisconsin. Each ARC serves and houses the records for a specific geographic area. The UWSP Archives serves a nine county area that includes Adams, Juneau, Langlade, Lincoln, Marathon, Portage, Waupaca, Waushara, and Wood. Our ARC has public records including tax rolls, naturalization records (see [Tips for Searching Naturalization Records](#)), state and federal censuses, and pre-1907 birth, death and marriage records. Other types of ARC materials located here include corporate records, personal papers, oral histories.

Archives Services

- [Cemetery Locator](#)
- [Genealogy FAQ's](#)
- [Local Censuses Index](#)
- [Local Obituary Index](#)
- [Local Naturalization index](#)
- [Pointer Index](#)
- [Records Management](#)
- [SP Journal Index](#)



The Archives and ARC underwent a major remodeling this past summer. Beginning in May 2011 all new moving shelving units have been added and each of the above collections has its own area in the units. A new research area in addition to new office and reception areas were also added.

Policies for researching remain the same with the one following exception: Patrons will no longer be allowed to enter the shelving areas. Items requested will be retrieved and brought to the new research area by one of the archivists.

To better make use of your time at the Archives and ARC, check the above indexes, the U.W. Stevens Point catalog at <http://forward.library.wisconsin.edu/> or U.W. Madison's catalog at <http://madcat.library.wisc.edu/> before you come to Steven Point's campus.



Top right: Newly constructed patron research/work area .

Middle right: New shelving unit at staff entrance of Area Research Center.

Bottom right: The new rolling shelving units in Area Research Center.



Miscellaneous Websites—

Ravenstein Atlas des Deutschen Reichs —

<http://www.library.wisc.edu/etext/ravenstein/>

An important historical atlas, covering Germany during the nineteenth century. The print version was published in 1883. The atlas helps in tracing the roots of families with origins in any part of the German empire from the late nineteenth century to the early twentieth century. Besides Germany, the maps of this atlas also cover the bordering portions of present-day Austria, Belgium, the Czech Republic, Denmark, France, Hungary, Lithuania, Luxembourg, the Netherlands, Poland, the Russian Federation, Slovakia, and Switzerland. Due to the large scale of its maps (1:850,000) and its thorough gazetteer of place-names, one can locate even small towns and villages on the maps in the Ravenstein atlas. A special feature is the marking of the locations of churches on all of the maps as well as one special map with an accompanying table giving statistics on the religious denominations found throughout the German empire down to the “Regierungsbezirk” and “Kreis” governmental units. Place-names and political jurisdictions often change over time.

(from Taylor County Genealogical Society Newsletter, Vol. 16, Is. 1, June 2011)

Lineage Websites

Daughters of the American Revolution (DAR)

http://www.dar.org/library/online_research.cfm

The online Genealogical Research System is a must-see for anyone considering or trying to ascertain if a family member was a Revolutionary War veteran. The database contains the names of Revolutionary War Patriots whose service and identity have been established by the NSDAR. Included is information on the dates and places of birth and death, names of spouses, residence during the Revolution, rank and type of service, and the state where the patriot served.

Emigration/Naturalization Websites

Ellis Island

<http://www.ellisland.org>

From 1892 to 1954, more than 12 million immigrants entered the US through the portal of Ellis Island, a small island in New York Harbor. Many Americans have emigrants who started their lives in the US after entering the country through this port. If your ancestor emigrated during this period from the UK, Europe, Scandinavia etc., there is a good chance that they came through this port (although, if your family is like many, some came through NY, some through Philadelphia, some through Boston, etc!)

Castle Garden

<http://www.castlegarden.org>

This free site offers access to an extraordinary database of information on 11 million immigrants from 1820 through 1892, the year Ellis Island opened. Over 100 million Americans can trace their ancestors to this early immigration period.

Joe Beine's Websites

If you are doing emigration/naturalization and not checking out the websites created by Joe Beine, you are probably missing something! Quickly go to “**What Passenger Lists are Online?**” <http://www.germanroots.com/onlinelists.html>, and “**Online Searchable Naturalization Indexes & Records**”, <http://www.germanroots.com/naturalization.html>, to see what is available online and what is not.

ISTG (Immigrant Ships Transcribers Guild)

<http://www.immigrantships.net>

Volunteers have transcribed over 11,000 Passenger Manifest. You can search what ISTG has transcribed or you can browse each volume (there are 12 as of this article going to print) where the ships are listed by date, name, port of departure, port of arrival and surname (especially helpful with those spelling variant issues). This site is great if you are seeking passengers who arrived in the 17th– and 18th-centuries and it has pretty extensive holdings for the 19th century and later.

(Above Lineage and Emigration/Naturalization sites from “Top 30 Websites for Family Research”, INTERNET Genealogy, October/November 2010, pp. 17-21.)

Additional Websites—(cont.)

NYC Naturalization Database—Volunteer Efforts By The Italian Genealogical Group

<http://www.italiengen.org/databaselist.stm>

This website has put a great collection of naturalization record indexes for Naturalizations recorded in the Eastern District (consisting of Kings, Richmond, Queens, Nassau and Suffolk Counties), Southern District (consisting of Manhattan, Bronx and Westchester Counties), as well as the Nassau and Suffolk county and Bronx and Queen Borough Supreme Courts. The collection is expanding to include other New York state naturalization records.

(from "Top 30 Websites for Family Research", *INTERNET Genealogy*, October/November 2010, pp. 17-21.)

[New York Genealogical and Biographical Record](#)

by Sam Sturgis, Digital Collections Administrator, and Ryan Woods, Director of Internet Technology

The New York Genealogical and Biographical Record is the premier genealogical journal devoted to scholarship on families residing in New York State and surrounding areas.

Published quarterly since 1870 by the New York Genealogical and Biographical Society, the *Record* features articles with a wide variety of sources, such as Bible records, census records, church registers, newspaper extracts, muster rolls, wills and deeds, and proceedings of the Society.

This week we have added volumes 6–10, containing 39,000 additional name records. The database currently contains volumes 1 through 10, publication years 1870 to 1879. Future volumes will be added periodically.

(from *The Weekly Genealogist*, Vol. 14, No. 51, Whole #562, December 21, 2011)

dailygenealogist@nehqs.org

“Marshfield” Book

For more information on **Ken Wood’s** book on “Marshfield”, check out the Arcadia Publishing website at: <http://www.arcadiapublishing.com/book/9780738588728>

Wisconsin Historical Society...

(continued from page 1)

Worker Movement. Part of his role has been to digitize significant amounts of material in the university's archival collections for Internet access, something that is also a priority at the Society.

While previously working at the Society, Blessing served as a public records and manuscripts processing archivist before assuming the responsibilities of collection development archivist and archivist for the Mass Communications History Center. From 1995 to 1999 he served as the educational outreach officer for the Public History Division (now the Division of Historic Preservation-Public History). The Society's library and archives maintain many collections of national scope, and the Society's library serves as the North American history library for the University of Wisconsin-Madison.

Blessing's appointment follows a yearlong national search. "We appreciate the efforts of the Society's staff and members of the Board of Curators in conducting such a thorough search," said Ellsworth Brown, The Ruth and Hartley Barker Director of the Society. "We also appreciate the excellent candidacy of Rick Pifer, the Library-Archives Division's director of reference and public services, whose candor and integrity continue to serve the Society well." Blessing will oversee a professional staff of 45 positions.

"The Society's research collections are extraordinary, not only for Wisconsin history, but across many aspects of American history," said Blessing. "People recognize and value the leadership that the Historical Society continues to play in preserving and presenting history. I'm excited to join an organization committed to doing such important work." The Wisconsin Historical Society, founded in 1846, ranks as one of the largest, most active and most diversified state historical societies in the nation. As both a state agency and a private membership organization, its mission is to help people connect to the past by collecting, preserving and sharing stories.)

(Thanks to Lori Belongia for sharing this story!)

Marshfield Draft Board Records 1917-1918 *(cont. from previous issue)*

The following list is that of individuals living in various wards in Marshfield, Wood County, WI, that were eligible for service. The original list is located in the Regional Archives at the University of Wisconsin—Stevens Point, Stevens Point, WI (2 folders—Call # Wood Small Series 3).

Third Ward, Precinct, City of Marshfield (cont.)

43 Miels, Hugo
44 Beitz, Valentine Xavier
45 Blum, Paul
46 Speerbecker, Alfred
47 Ganger, Wm. H.
48 St. Dennis, Leonard
49 Baumann, Frank G.
50 Schmidt, Anton
51 Lindsley, Chester Adelbert
52 Witt, Herman O.C.
53 Martin, Geo. L.
54 Judkins, Glenn D.
55 Rasmussen, Albert James
56 Salter, Louis Adam
57 Wiltgen, Peter John
58 Speerbecker, Vernie August
59 Hansen, Vinton
60 Soles, Walter Henry
61 Tollefson, Bernard Harold
62 Severns, James
63 Staeck, John
64 Blodgett, Jerre B.
65 Haas, Lewis Paul
66 Zettler, Arthur
67 Ebsen, Henry Rudolph
68 Eggebrecht, William Martin
69 Finger, Benjamin H.
70 Rhodes, William Henry
71 Lee, Richard
72 Weaver, Clinton
73 Stengl, Alfred
74 Schilleman, Alvin E.
75 Donhard, John J.
76 Ettel, William
77 Nelson, Harry O.
78 Jost, John
79 Staeck, Joseph
81 Somers, Charles A.
82 Barkley, William
83 Sommers, Herman
84 Arendt, Emil C. L.

85 Tremmel, Matt Paul
86 Randles, Clare Layton
87 Schuh, Leo J.
88 Krieg, Thomas
89 Demick, Charles
90 Atwood, Harry W.
91 Laschinski, Frank
92 Steinert, Arthur
93 Heckham, Harvey
94 Grewohl, Emil
95 Maurer, John
96 Wistrom, Elmer
97 Larkin, John L.
98 Kopf, John J.
99 Patt, Arthur
100 Elmer, Casper
101 Jones, Robert Charles
102 Martin, Andrew H.
103 Schuh, William
104 Wilcott, Henry
105 Jones, Fred
106 Poppy, Ernst
107 Trierweiler, William
108 Hensey, Alfred W.
109 Bartmann, Herbert C.
110 Schmidt, Edward M.
111 Parks, Edward
112 Witt, Theodore Oscar
113 Klug, Wm. A. A.
114 Reese, Peter
115 Prusow, Max
116 Krings, Mitchell F.
117 Sawicki, Joseph
118 Trierweiler, Nicolas F.
119 Eckes, Theodore H.
120 Zettler, Adolph G.
121 Kesten, Edward G.
122 Schmidt, Henry J.
123 Finnican, Raymond T.
124 Eckes, Raymond J.
125 Schuh, Edward
126 Wein, Adolph Gustav Herman
127 Wharfield, Ernest W.

Fourth Ward, Precinct, City of Marshfield

1 Quade Ferdinand
2 Trowbridge, Ernest Eugene
3 Vannedon, Columbus J.
4 Boulieu, Joseph
5 Miller, Mike W.
6 Stock Otto
7 Emmerich, Adam Peter
8 Furstenberg, Edward H.
9 Miller, Isadore Joseph
10 Rochon, William J.
11 Laemle, Arthur M.
12 Ewer, Arthur
13 Welton, Andrew D.
14 Krueger, Louis Carl
15 Krueger, Gerhard Henry
16 Leitritz, Edward Otto
17 Davis, Ernest Carl
18 Martin, Charles Henry
19 Moeller, Oscar
20 Rakow, William Charles
21 Moldenhauer, Arthur Herman
22 Wolf, Philip
23 Sherman, James Harlow
24 Schiller, Gustave
25 Blum Jr., Peter
26 Lueck, Otto Emil
27 Murphy, Arthur Cyriak
28 Ettel, Frank
29 Whitney, George Wayne
30 Aschenbrenner, Anton
31 Kelly, Commodore
32 Krier, Peter J.
33 Loche, Rudolph Dan
34 Reeths Jr., Fred
35 Harrington, Roswell Hosey
36 McDonald, Thomas Francis
37 Ettel, John
38 Spencer, Robert Herman
39 Wendt, Irvin William
40 Miller, Edward Henry
41 Kehrberg, August

Marshfield Draft Board Records 1917-1918 (cont.)

- 42 Hartnett, Lee Glen
 43 Kehrberg, Otto Karl
 44 Miner, Walter E.
 45 Jacobson, Theodore C.
 46 Sherwood, Roy Glen
 47 Buresch, Emil W.
 48 Wharfield, Harold
 49 Stehling, Hubert John
 50 Mechler, Edward Charles
 51 Goggins, Bernard
 52 Beck, Robert Herman
 53 Goldbach Jr., Joseph W.
 54 O'Leary, Don
 55 Leith, Roy James
 56 Billings, Clifford Delas
 57 Martin, Walter Ambrose
 58 Miller, Ernest August
 59 Campbell, John Addison
 60 Ettel, Joseph
 61 Sherwood, Jesse Rex
 62 Goodin, George Raymond
 63 Wilhelm, H. A.
 64 Schuler, Grover Henry
 65 Schuler, Carl William
 66 Lubeck, Edgar August
 67 Goldbach, Frank Wenz
 68 LaBelle, Vernon J.
 69 Krahn, Elmer Robert
 70 Krahn, Fred Lewis
 71 Ledger, Erwin Moses
 72 Ledger, Roland W.
 73 Storm, Alfred H.
 74 Michels, Mathew P.
 75 Stauber, Frank Andrew
 76 Hendricks, Albert
 77 Weber, Hubert John
 78 Soles, Louis Frank
 79 Van Kulen, John A.
 80 Pinion, Joseph Francis
 81 Warner, Rudolph
 82 Winch, Rollins Carlton
 83 Bradle, John
 84 Freund, Fred
 85 Binder, Frank Joseph
 86 Rossman, Edward
 87 Clark, Chester Arthur
 88 Gehler, Hugo Albert
 89 Wilson, Reuben Louis
 90 Weisse, Will Fred August
 91 Dickerson, Elmer Carl
 92 Wilson, Carl Kent
 93 Sadowska, Fred
 94 Nelson, August
 95 Callies, Reinhold H.
 96 Hahn, Paul
 97 Krasin, Wilhelm
 98 Multer, Peter Paul
 99 Kroll, Wm. Richard
 100 Jadack Jr., John James
 101 Smith, Charles Donald
 102 Kohl, Edward Chas.
 103 Winch, Ray
 104 Kloskey, Leo T.
 105 Miller, Mike John
 106 Anderson, Harry Steven
 107 Reichart, Edwin Carl
 108 Kestel, Mathew Joseph
 109 Cliver, Sylvester Chas.
 110 Parks, Ray Gilbert
 111 McDonald, John Stephen
 112 Strauss, Edwin Lawrence
 113 Hintz, Fred Emil
 114 Schmidt, Louis August
 115 Storm, Emil Gustave
 116 Heaslett, Charles Norman
 117 Wendt, Theodore Albert
 118 McKenna, John Leo
 119 Kalbskopf, Richard John
 120 Schiller, Otto
 121 Gross, Chas. Fred
 122 Bergan, Christ
 123 Steinmietz, Frank Lawrence
 124 Hauf, Fred
 125 Eckes, Peter
 126 Franckonwiak, William
 127 Imoehl, William John
 128 Herkert Jr., John
 129 Imoehl, August
 130 Herkert, Charles
 131 Roেকেlein, John Conrad
 132 Diem, John Conrad
 133 Mueller, Frank Joseph
 134 Bores, Leonard
 135 Scheibe, Hugo E.
 136 Haight, George William
 137 Wellner, Anton
 138 Wellner, George
 139 Weber, Herbert Chas.
 140 Zenner, Mike
 141 Felhofer, John
 142 Lex, Elmer John
 143 Kraemer, Edward Conrad Adam
 144 Fohl, Edward
 145 May, Arthur
 146 Bohman, Louis
 147 Specht, Frank
 148 Ott, Joe
 149 Steinwagner, Michel
 150 Mioskowski, Louis
 151 Hunter, Albert Asa
 152 Wein, Frederick Aug.
 153 Noll, George William
 154 Beck, Joseph Alois
 155 Kehrberg, Jr., Herman Fred
 156 Moltner, Herman
 157 Gilsdorf, Arthur August
 158 Wharfield, Aubrey Charles
 159 Small, Hannie
 160 Schoenek, Gustav
 161 Jones, Merritt
 162 Kupper, Boleslaw
 163 Steinwagner, John
 164 Johnson, Alvin
 165 Holum, Stephen
 166 Hansen, Max
 167 Frohman, Gerhard
 168 Chase, John
 169 Compeau, Alfred
 170 Conley, Dennis
 171 Hoffman, Anton
 172 Worlund, Victor
 173 Hill, Edward
 174 Marcewski, Alexander
- Fifth Ward, Precinct,
 City of Marshfield**
 1 Pearson, George John
 2 Meyers, Don Clyde
 3 Ott, Martin
 4 Kenney, William R.
 (To be Continued)

Family Searches For More of Architect's Structures

By Carol & Ken Krasin



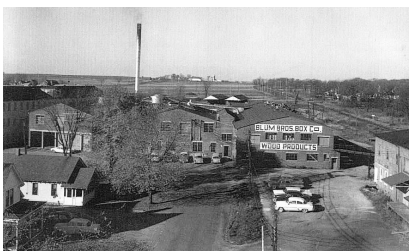
Gus Krasin Family, Lawrence (back left), Karlton (back right), Gus and Elsa (front).



The Charles Hotel, Marshfield, WI (1925).



Weber Grocery Store (1941), currently Four Seasons Antique Mall, Marshfield, WI.



Blum Brothers Box Co., currently the Marshfield Furniture Factory, Marshfield, WI.

Today marks the 60th anniversary of the death of Gus A. Krasin, Marshfield's first resident architect who practiced architecture from 1910 until 1951.

There are only four buildings that the city of Marshfield has credited to Gus: the Roddis Home (1914); Weinbrenner Shoe Factory (1935); Adler (now Rogers) Theatre (1937); and the Armory (1942).

Through the research of Ken Krasin, Gus' grandson and me, Ken's wife, Carol, we have identified and verified more than 40 structures just in Marshfield. We have also identified more than 200 structures Gus designed in the northern half of Wisconsin.

Several years ago, with the help of the Internet, Ken discovered that Gus' buildings were listed in the Architecture and Historical Inventory for Wisconsin. Along with the four buildings Marshfield presently credits Gus for designing, other buildings in Marshfield on this Historical Inventory include: the original Marshfield Clinic (1927), now part of the City Hall Building; Gus Krasin's home (1936), 808 Oak; and WDLB Radio Station Building (1947).

Others structures listed in the Wisconsin Historical inventory, which are not in Marshfield, are: the Waupaca Block (1913) in Waupaca; Osseo City Hall (1937) (razed 2010); and Wood County Home for the Aged (1928) (now Edgewater Haven Nursing Home) Port Edwards.

We have verified that in Marshfield the following buildings were designed by Gus: The Charles Hotel (1925); Weber Grocery Store (1941); Ronald McDonald House, which was built in 1921 as the Parsonage for St. Joseph's Hospital; warehouse for Roddis Lumber Co. (1942); office building for Roddis Lumber; office building for Connor Lumber & Land Company (1951); Blum Brothers Box Co. (now the Marshfield Furniture Factory); the Union Hall for A.F. of L. Local 1733; the original Rembs Funeral Home (razed); Hartl Apartments (1943); several styles of homes for Roddis employees; Penney Store (1928); and the Parish Hall and Recreation Hall (1951) for Immanuel Lutheran Church – to name a recognizable few., and later Bill formed the Marshfield Construction Co.

There are other buildings that Gus designed, however, we have no information as to where they are or perhaps were: F. I Diddle Building (1926); store building for Karau-Radtke (1941); warehouse for Central Cheese Corp. (1945); Perko Implement Co. offices and shop (1945); shoe store for Colberts Shoe (1946); showroom and shop for Farmers' Coop (1949); and the Marshfield Feed Store. We still are working on locating, identifying and verifying these and many other structures.

Gus also designed residences for Charles Towne, Route 3

(1945); W. C. Wolff (1949); and John L. Stauber (1950), however, we are not sure where in Marshfield these homes are since no addresses were specified. So if you know any of these people or their descendants, please let us know where they used to live.

Last May, we began an intensive search for any and all buildings that were designed by Gus and buildings built by Krasin Brothers. This was a construction company Gus and his brother Jake owned and operated until the crash of 1931. Gus' younger brother Bill worked with them as a foreman, and later Bill formed the Marshfield Construction Co.

Our search began with a genealogy class conducted by the Marshfield Area Genealogy Group. Their leads and guidance to information has been invaluable. The Marshfield Library has excellent historical information – old newspapers on microfilm, city directories, plat books. We also searched in Madison at the Historical Society for information on specific buildings. We continuously search the Internet, which led us to the American Contractor publications that documented contracts let to Gus A. Krasin as architect in the early 1920s.

Our research has led us to relatives we had not met. Don Krasin of Marshfield is Gus' nephew (Bill's son). Don shared many stories about homes of family members, structures the Krasins built and basic family history. His memories have led us to many buildings both in Marshfield and nearby towns. We also met Bill's grandchildren: Dori Rhody of Sun Prairie, Patty Nanning and Jim Shaw of Marshfield. Patty lives in a home that it is believed was designed by Gus and built by Bill and Don.

Because of the Internet, contact was made with Douglas O'Donnell, an architect, who worked with Gus from 1945 to 1951. He has been a wonderful resource for stories about the structure they designed during those years and tales from Gus about other buildings designed before Doug's employ as well as insight into Gus' work ethics.

Ken and I have been enjoying our travels through northern Wisconsin trying to photographically document the structures that remain. We have met so many wonderful, helpful, knowledgeable people who have been anxious to direct us and share whatever info they have that will help us in our search. Our thanks goes to them. Our search will continue because we also have information about designs for buildings in Michigan, Indiana, Arkansas and even Canada. So, the search and verification goes on.

If you have any helpful information, please email

kckrasin@comcast.net.

Carol and Ken Krasin live in Darien, IL.

Update: Carol and Ken have received information since their article ran in the Marshfield Hews Herald, Dec.9, 2011. They have learned the Karau-Radke building is now the Sherwin Williams store at 333 Central and the Colbert's Shoe Store is now the vacant LaDots at 327 Central Ave., Marshfield. Another building, the Clark Electric Cooperative, Greenwood, WI has been identified as having Gus as the architect. And one other tip also mentioned that the Westley United Methodist Church in Marshfield was designed by Gus.



Marshfield Grocer Co., Marshfield, WI.



Hamilton Roddis Home, E. Fourth St., Marshfield, WI.



Home for Charles Froemming (Gus' Father-in-law) in Madison, WI.



Gus (left) & Jake (right) Krasin shortly after 1921 in front of unknown construction site.

**MARSHFIELD
AREA
GENEALOGY
GROUP**

Phone: 715-897-1910
or 715-387-4044

Email:
schnitzl@charter.net

We're on the Web!

<http://www.marshfieldgenealogy.com>

and look for us on **facebook**

Upcoming Meetings

January 26, 2012—"A Trip to Ireland"

Noreen Moen will share pictures and tales of her recent visit with friends and family in the southwestern counties of Ireland.

February 23, 2012—"Telling a Family Story"

Marshfield Public Library children's librarian, Kim Ropson, will share tips on developing and telling your family's stories.

March 22, 2012—"The Women in Our Families' Lives"

Recognizing that March is Women's History Month, MAGG members will share stories about a woman in their family. Do you have a photograph, bring it to the February meeting, and Schnitz will scan into a PowerPoint for projection as you tell your story.

April 26, 2012—"Pomeranian Genealogy"

The Pommerscher Verein Central Wisconsin exists to preserve the language and heritage of its members' ancestors who immigrated primarily from the Prussian Provinces of Pomerania, West and East Prussia, and Posen; to record the rich history of the settlers; and to be a resource for genealogy research. Laurel Hoffman, a member of the PVCW will explain how she and the organization might help with German genealogical research here in the United States.

Meetings of the Marshfield Area Genealogy Group are regularly held at 7:00 p.m. on the fourth Thursday of each month at the Marshfield Public Library, except August (traditionally our family picnic) and November & December (no meetings) unless otherwise specified.



Marshfield Area Genealogy Group
P.O. Box 337
Marshfield, WI 54449-0337